



# **SOUTH AUSTRALIAN ECONOMIC INDICATORS**

EMBARGO: 11:30AM (CANBERRA TIME) THURS 1 FEB 2001

## **C O N T E N T S**

	<i>page</i>
Notes .....	2
REVIEW	
South Australian overview .....	3
Selected features .....	4
TABLES	
List of tables. ....	5
Statistical summary. ....	6
State summary. ....	8
State accounts. ....	9
International trade. ....	10
Consumption and investment. ....	14
Production. ....	16
Consumer price index. ....	20
Labour force and demography. ....	21
Average weekly earnings. ....	24
Financial markets. ....	25
ADDITIONAL INFORMATION	
Publications source index. ....	26

- For further information about these and related statistics, contact Treva Richards on Adelaide 08 8237 7338, or the National Information Service on 1300 135 070.

## NOTES

### FORTHCOMING ISSUES

<i>ISSUE</i>	<i>RELEASE DATE</i>
March 2001	1 March 2001
April 2001	2 April 2001
May 2001	1 May 2001
June 2001	1 June 2001
July 2001	2 July 2001
August 2001	1 August 2001

### ABOUT THIS PUBLICATION

*South Australian Economic Indicators* is a monthly publication which contains the latest available data at the time of preparation for a range of statistical series that have been identified as indicators of economic activity in this State. In a number of cases the figures presented are preliminary and subject to revision in subsequent issues.

### DATA NOTE

ABS statistical series are being impacted to varying degrees as a result of The New Tax System, introduced in Australia from 1 July 2000. The New Tax System includes the removal of Wholesale Sales Tax and the introduction of a Goods and Service Tax (GST), and as a result, a number of ABS data series will reflect significant immediate and subsequent impacts. In future issues, implications of The New Tax System on series will be footnoted at the bottom of tables. For more information please see the Notes section in relevant publications.

Due to the suspension of trend series data for retail turnover, tables 1, 2 and 9 show seasonally adjusted data. Trend series data for retail turnover will be reintroduced in the next edition of this publication. Table 17 now shows the 14th Series CPI which commenced in the September quarter 2000. For more information see *Consumer Price Index, Australia* (Cat. no. 6401.0).

### SYMBOLS AND OTHER USAGES

n.a.	not available
n.y.a.	not yet available
*	subject to sampling variability too high for most practical purposes
..	not applicable
0, 0.0	nil, or rounded to zero

### ROUNDING

Where figures have been rounded, discrepancies may occur between sums of the component items and totals.

### INFORMATION

All data are original, unless otherwise stated. More detailed information on each series, including explanatory and technical notes, can be obtained from other Australian Bureau of Statistics publications or alternative data sources. To assist those seeking further information, the series presented in the statistical and state summaries provides a reference to the Publication Source Index which is at the end of this publication.

I. Crettenden  
Regional Director  
South Australia

## OVERVIEW

Data in the tables are generally expressed in original terms, while the data in this Overview are presented in trend terms, unless otherwise stated.

### INTERNATIONAL TRADE

The value of merchandise exports in original terms for the month of November was \$603.9m. This is an increase of 8.3% on the value for October and an increase of 20.1% over November 1999. The value of merchandise imports released from Customs control in original terms for South Australia was \$552.9m in November. This is an increase of 61.0% on the value for October and an increase of 49.6% over November 1999. An exceptionally high import value was recorded for petroleum and petroleum products in November.

### CONSUMPTION AND INVESTMENT

The seasonally adjusted estimate of retail turnover rose (4.1%) in November 2000 to \$956.3m. All industry groups recorded an increase with the largest rise occurring in Recreational goods retailing (10.5%). Nationally total retail turnover fell slightly by 0.6%.

New motor vehicle registrations fell slightly in November (0.9%) to 4,227. Passenger vehicle registrations (0.5%) and Other vehicle registrations (3.0%) also fell. Compared to November 1999, new registrations have increased 7.4%. In original terms there were 4,534 new motor vehicle registrations for the month.

Private new capital expenditure increased 3.7% in the September quarter to \$668.0m which was 19.7% higher than the September quarter 1999. In original terms private new capital expenditure for the quarter was \$585.0m.

### HOUSING

In the month of November 2000, the total number of dwelling units approved increased 3.0% to 512 dwellings. Private sector dwelling units approved increased by 3.5% to 506 dwellings after falling for nine consecutive months from a peak of 1,011 dwelling units in January 2000 to a low of 489 dwelling units in October 2000.

### CONSUMER PRICE INDEX

The Consumer Price Index (all groups) in Adelaide increased by 3.7% to 132.3 in the September quarter of 2000, and by 5.8% over the level recorded twelve months previously. The main contributors to the recent quarterly growth were Clothing & Footwear (up 9.2%), Communication (up 6.9%), and Alcohol & Tobacco (up 6.0%).

### LABOUR FORCE AND DEMOGRAPHY

The estimate of employed persons in South Australia has declined since September 2000, reaching 674,900 in December 2000. The latest estimate is slightly higher than the level of twelve months ago (674,400).

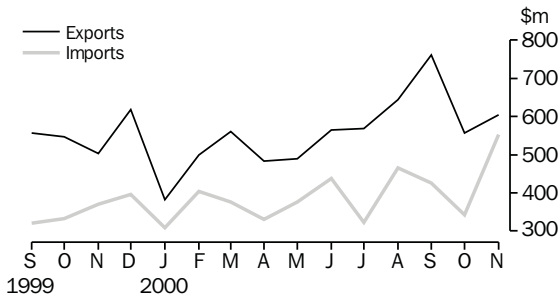
The estimate of the unemployment rate for South Australia has settled at 7.4% in recent months, after decreases observed to mid 2000. The current rate is lower than the 8.1% recorded in December 1999.

### FINANCIAL MARKETS

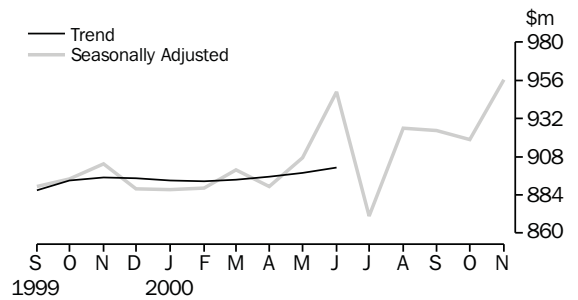
The value of secured housing finance commitments (excluding alterations and additions) in November declined marginally (0.5%) to \$364.0m. This was a decrease of 4.2% compared with November 1999.

## SELECTED FEATURES

MERCHANDISE EXPORTS AND IMPORTS

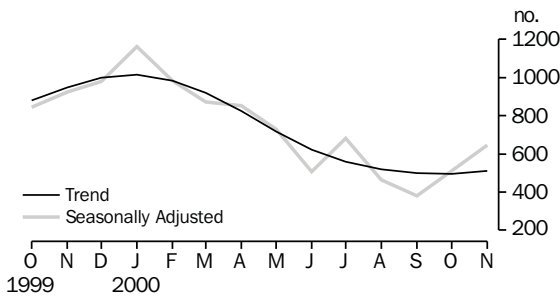


RETAIL TURNOVER(a)

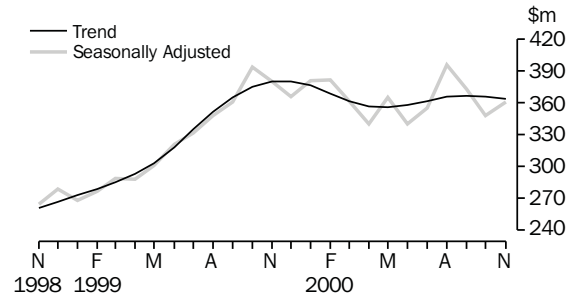


(a) Retail turnover trend series has been suspended. For more information see Data note on page 2.

DWELLING UNITS APPROVED

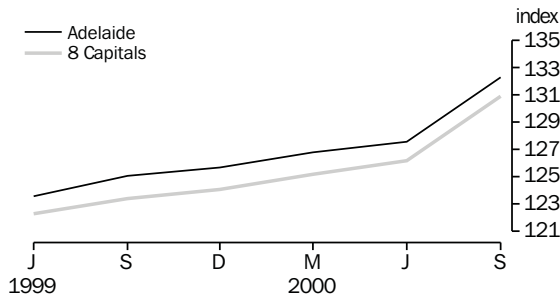


SECURED HOUSING FINANCE COMMITMENTS (a)

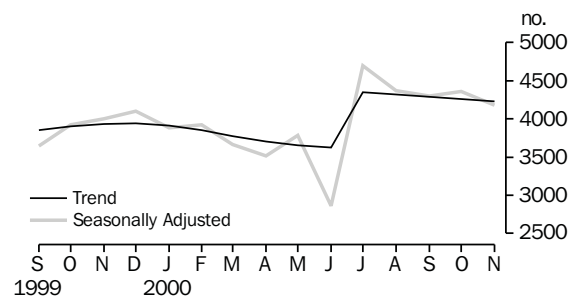


(a) Excludes alterations and additions. Includes refinancing.

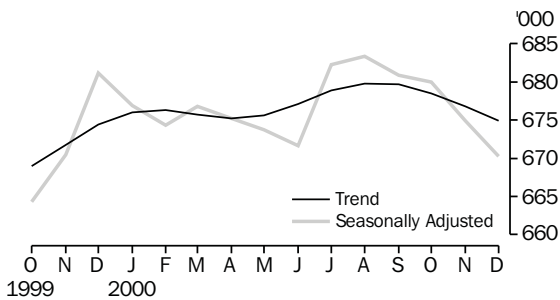
CONSUMER PRICE INDEX



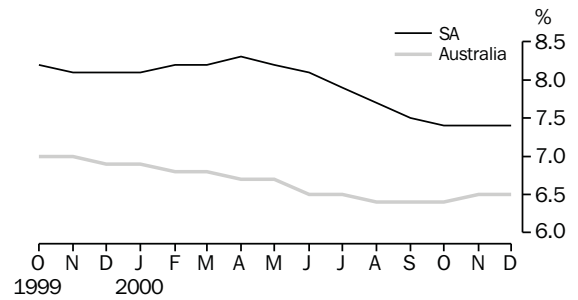
MOTOR VEHICLE REGISTRATIONS



EMPLOYED PERSONS



UNEMPLOYMENT RATE - TREND



## LIST OF TABLES

			Page
STATISTICAL SUMMARY	<b>1</b>	Statistical summary	6
	<b>2</b>	State summary	8
STATE ACCOUNTS	<b>3</b>	State accounts at current prices	9
	<b>4</b>	State accounts at chain volume measures	9
INTERNATIONAL TRADE	<b>5</b>	Merchandise exports, by selected commodity group	10
	<b>6</b>	Merchandise exports, by selected countries and country groups	11
	<b>7</b>	Merchandise exports, by industry of origin	12
	<b>8</b>	Merchandise imports, by selected commodity group	13
CONSUMPTION AND INVESTMENT	<b>9</b>	Turnover of retail establishments, by industry—trend	14
	<b>10</b>	New motor vehicle registrations, by type of vehicle	14
	<b>11</b>	Actual private new capital expenditure, by selected industry and type of asset	15
	<b>12</b>	Tourist accommodation	15
PRODUCTION	<b>13</b>	Building approvals	16
	<b>14</b>	Building commencements	17
	<b>15</b>	Value of building work done and completed during period	18
	<b>16</b>	Production, livestock products and selected commodities	19
CONSUMER PRICE INDEX	<b>17</b>	Consumer price index, by group—Adelaide	20
LABOUR FORCE AND DEMOGRAPHY	<b>18</b>	Estimated resident population and components of population change	21
	<b>19</b>	Births, deaths, marriages and divorces	21
	<b>20</b>	Civilian labour force status	22
	<b>21</b>	Civilian labour force, unemployment and participation rates	23
AVERAGE WEEKLY EARNINGS	<b>22</b>	Average weekly earnings of employees	24
FINANCIAL MARKETS	<b>23</b>	Secured housing finance commitments	25
	<b>24</b>	Finance commitments	25

Indicator	Period	South Australia			Australia			SA as a % of Aust.	Source index
		Number	% change from		Number	% change from			
			Previous period	Same period previous year		Previous period	Same period previous year		
<b>State accounts</b>									
Domestic final demand									
Current prices trend (\$m)	Sep qtr 00	11 176	1.0	6.2	166 198	1.3	6.4	6.7	(1)
Chain volume measures trend (\$m)	Sep qtr 00	10 820	0.0	3.5	161 436	0.2	3.7	6.7	(1)
Private final consumption expenditure									
Current prices trend (\$m)	Sep qtr 00	6 924	2.0	6.9	97 665	2.1	6.8	7.1	(1)
Chain volume measures trend (\$m)	Sep qtr 00	6 694	0.6	4.0	94 445	0.7	3.7	7.1	(1)
Private gross fixed capital formation									
Current prices trend (\$m)	Sep qtr 00	1 754	-1.5	7.8	31 150	-0.7	4.4	5.6	(1)
Chain volume measures trend (\$m)	Sep qtr 00	1 684	-2.1	5.8	30 665	-1.5	2.4	5.5	(1)
Compensation of employees									
Current prices trend (\$m)	Sep qtr 00	5 211	1.7	5.8	79 559	1.9	7.8	6.5	(1)
<b>International accounts</b>									
Exports (\$m)	Nov 00	603.9	8.3	20.1	9 974.7	-1.4	26.1	6.1	(2)
Imports (\$m)	Nov 00	552.9	61.0	49.6	11 017.8	0.6	13.6	5.0	(2)
<b>Consumption and investment</b>									
Retail turnover									
Current prices original (\$m)	Nov 00	1 000.2	7.4	7.4	13 182.2	3.5	4.6	7.6	(3)
Current prices seasonally adjusted (\$m)	Nov 00	956.3	4.1	5.9	12 665.3	-0.6	3.0	7.6	(3)
Chain volume measures original(\$m)	Sep qtr 00	2 525.1	-2.2	-1.1	34 796.7	-1.7	-1.1	7.3	(3)
New motor vehicle registrations									
Original (no.)	Nov 00	4 534	6.9	4.6	68 395	5.1	3.8	6.6	(4)
Trend (no.)	Nov 00	4 227	-0.9	7.4	66 276	-0.7	7.6	6.4	(4)
Private new capital expenditure									
Current prices original (\$m)	Sep qtr 00	585	-15.5	-6.4	9 971	-12.2	-6.4	5.9	(5)
Current prices trend (\$m)	Sep qtr 00	668	3.7	19.7	10 535	0.6	0.9	6.3	(5)
Private new capital expenditure (\$m)	1999-00	2 451	7.6	7.6	42 447	-5	-5.0	5.8	(5)
Takings, licensed hotels, motels, guest houses and apartments with facilities (\$m)	Sep qtr 00	49.0	0.0	10.4	1 302.2	25.3	20.8	3.8	(6)
<b>Production</b>									
Dwelling unit approvals									
Original (no.)	Nov 00	661	28.6	-33.4	10 798	13.4	-34.6	6.1	(7)
Trend (no.)	Nov 00	512	3.0	-45.9	9 130	0.4	-41.7	5.6	(7)
Dwelling units commenced (no.)	Sep qtr 00	1 824	-23.2	-15.3	29 605	-30.8	-29.6	6.2	(8a)
Value of non-residential building approvals (\$m)	Nov 00	48.2	6.4	33.1	961.5	-6.9	-5.6	5.0	(7)
Value of total building activity									
Commenced (\$m)	Sep qtr 00	415.7	-11.4	3.6	7 356.5	-26.4	-20.1	5.7	(8)
Work done (\$m)	Sep qtr 00	398.1	-24.9	-7.5	8 913.2	-22.4	-5.9	4.5	(8)
Work yet to be done (\$m)	Sep qtr 00	526.7	6.1	21.8	11 266.9	-7.2	-11.8	4.7	(8)
Value of engineering construction work done (\$m)	Sep qtr 00	252.1	-27.4	-37.1	4 403.4	-14.3	-8.1	5.7	(9)
Manufacturing production									
Red meat (tonnes)	Sep qtr 00	50 206	-7.5	20.4	784 646	1.5	65.3	6.4	(11)
Mineral exploration expenditure (other than for petroleum)(a) (\$m)	Sep qtr 00	5.5	-57.0	-15.4	169.8	-12.9	-5.7	3.2	(12)

(a) From July 2000 value data no longer contains Wholesale Sales Tax.

Indicator	Period	South Australia			Australia			SA as a % of Aust.	Source index
		Number	% change from		Number	% change from			
			Previous period	Same period previous year		Previous period	Same period previous year		
<b>Prices(a)</b>									
CPI—All groups (index no.)	Sep qtr 00	132.3	3.7	5.8	130.9	3.7	6.1	..	(13)
Price index of materials used in house building (index no.)	Oct qtr 00	129.7	-0.1	2.9	124.4	-0.1	2.4	..	(14)
Price index of materials used in building other than houses (index no.)	Oct qtr 00	116.8	0.7	1.2	116.3	0.7	1.0	..	(15)
Price index of established houses (index no.)	Sep qtr 00	127.6	0.6	6.2	147.1	-0.1	7.5	..	(16)
Price index of project homes (index no.)	Sep qtr 00	141.7	8.7	16.4	134.3	9.3	14.8	..	(16)
<b>Labour force and demography</b>									
Population (resident at end qtr) ('000)	Jun qtr 00	1 497.6	0.0	0.3	19 157.0	0.3	1.2	7.8	(17)
Short-term overseas visitor arrivals (no.)	Jul 00	10 230	12.0	19.7	429 030	23.3	10.4	2.4	(21)
Short-term resident departures (no.)	Jul 00	18 630	28.6	6.1	296 940	-2.2	3.6	6.3	(21)
Labour force									
Original ('000)	Dec 00	735.3	0.5	-2.1	9 862.1	2.0	1.5	7.5	(18)
Trend ('000)	Dec 00	728.6	-0.3	-0.7	9 715.8	0.0	1.6	7.5	(18)
Employed persons									
Original ('000)	Dec 00	681.2	0.6	-1.6	9 224.5	1.7	2.0	7.4	(18)
Trend ('000)	Dec 00	674.9	-0.3	0.1	9 083.4	-0.1	2.0	7.4	(18)
Participation rate									
Original(b) (%)	Dec 00	60.9	0.4	-1.6	64.4	1.2	0.1	..	(18)
Trend(b) (%)	Dec 00	60.3	-0.2	-0.8	63.5	-0.1	0.2	..	(18)
Unemployment rate									
Original(b) (%)	Dec 00	7.4	0.0	-0.5	6.5	0.3	-0.4	..	(18)
Trend(b) (%)	Dec 00	7.4	0.0	-0.7	6.5	0.0	-0.4	..	(18)
Job vacancies ('000)	Nov 00	5.4	1.9	-14.3	119.8	2.7	13.1	4.5	(19)
Industrial disputes ('000 working days lost)	Sep 00	1.3	1 200.0	1 200.0	31.0	-5.8	-52.2	4.2	(20)
<b>Income</b>									
Average weekly earnings (full-time adults; ordinary time)									
Original (\$)	Aug 00	745.50	2.6	6.2	798.10	2.0	6.2	..	(22)
Trend (\$)	Aug 00	743.50	1.7	5.9	796.60	1.5	5.5	..	(22)
Wage cost index (total hourly rate excluding bonuses)(c) (index no.)	Sep 00	109.1	0.9	3.0	109.7	1.2	3.1	..	(23)
<b>Financial markets</b>									
Secured housing finance(d) (\$m)	Nov 00	394.0	14.2	-6.6	5 915.0	13.9	-17.7	6.7	(24)
Finance commitments									
Personal (\$m)	Nov 00	312.9	25.9	11.7	4 744.8	18.4	5.8	6.6	(25)
Commercial (\$m)	Nov 00	541.9	36.3	6.0	12 271.2	-8.1	-4.3	4.4	(25)
Lease (\$m)	Nov 00	13.6	44.9	7.2	474.7	9.7	-27.0	2.9	(25)
Interest rates(b)									
Banks new housing loans (%)	Nov 00	..	..	..	8.05	0.00	1.25	..	(26)
Bank loans—small, medium business(e) (%)	Nov 00	..	..	..	9.20	0.00	1.55	..	(26)
Bank loans—large business (%)	Nov 00	..	..	..	9.75	0.00	1.60	..	(26)

(a) Base year of each index 1989-90=100.

(b) Change is shown in terms of percentage points.

(c) Base year of index Sep 1997=100.

(d) Excludes alterations and additions. Includes refinancing.

(e) Rate for business loans over \$50,000.

## 2

### STATE SUMMARY

<i>Indicator</i>	<i>Period</i>	<i>NSW</i>	<i>Vic.</i>	<i>Qld</i>	<b>SA</b>	<i>WA</i>	<i>Tas.</i>	<i>NT</i>	<i>ACT</i>	<i>Source index</i>
SELECTED INDICATORS										
CPI—All groups(a) (index no.)	Sep qtr 00	131.6	130.4	131.3	<b>132.3</b>	128.6	131.3	130.0	130.7	(13)
Participation rate trend (%)	Dec 00	62.1	63.6	64.8	<b>60.3</b>	66.7	59.8	70.4	73.7	(18)
Unemployment rate trend (%)	Dec 00	5.8	6.1	7.9	<b>7.4</b>	6.2	8.9	6.3	4.5	(18)
Average weekly earnings (full-time adults; ordinary time) trend (\$)	Aug 00	834.70	782.40	747.10	<b>743.50</b>	812.60	745.30	805.10	916.80	(22)

#### SELECTED INDICATORS PER HEAD OF POPULATION(B)

State final demand										
Chain volume measures trend (\$'000)	Sep qtr 00	8.8	8.4	7.9	<b>7.2</b>	8.1	6.9	10.2	15.9	(1)
Retail turnover										
Current prices original (\$)	Nov 00	699.4	663.7	694.4	<b>667.9</b>	700.4	625.2	693.7	877.0	(3)
Current prices seasonally adjusted (\$)	Nov 00	674.8	633.3	669.1	<b>638.5</b>	670.9	597.0	687.6	848.3	(3)
New motor vehicle registrations trend (no. per '000 population)	Nov 00	3.5	3.6	3.7	<b>2.8</b>	3.4	2.9	3.2	3.8	(4)
Private new capital expenditure										
Current prices trend (\$)	Sep qtr 00	644.5	549.7	472.8	<b>446.0</b>	567.5	293.4	388.8	286.3	(5)
Dwelling unit approvals										
Original (no. per '000 population)	Nov 00	0.535	0.440	0.523	<b>0.343</b>	0.644	0.257	0.358	0.595	(7)
Trend (no. per '000 population)	Nov 00	0.445	0.514	0.495	<b>0.332</b>	0.610	0.213	0.358	0.515	(7)
Secured housing finance(c) (\$)	Nov 00	373.8	282.2	250.4	<b>263.1</b>	342.9	182.8	179.1	318.5	(24)

#### PERCENTAGE CHANGE FROM PREVIOUS PERIOD

State final demand										
Chain volume measures trend (%)	Sep qtr 00	1.1	0.3	0.0	<b>0.0</b>	-0.9	0.0	0.0	0.1	(1)
Retail turnover										
Current prices original (%)	Nov 00	1.5	6.4	1.8	<b>7.4</b>	3.8	7.1	-2.2	5.1	(3)
Current prices seasonally adjusted (%)	Nov 00	-2.4	1.3	-2.4	<b>4.1</b>	0.6	1.2	0.7	1.9	(3)
New motor vehicle registrations trend (%)	Nov 00	0.0	-1.8	-0.4	<b>-0.9</b>	-1.5	3.1	-1.2	0.9	(4)
Private new capital expenditure										
Current prices trend (%)	Sep qtr 00	5.3	-1.4	-6.0	<b>3.7</b>	-7.8	7.8	-29.0	-9.2	(5)
Dwelling unit approvals										
Original (%)	Nov 00	-1.5	47.1	16.7	<b>28.6</b>	-4.1	-4.1	-12.9	-32.4	(7)
Trend (%)	Nov 00	3.9	-2.2	-0.3	<b>3.0</b>	-4.3	-2.0	-17.1	1.9	(7)
CPI—All groups (%)	Sep qtr 00	3.6	3.8	3.9	<b>3.7</b>	3.7	3.8	3.4	3.8	(13)
Participation rate trend(d) (%)	Dec 00	-0.1	-0.1	0.0	<b>-0.2</b>	0.1	0.1	0.4	0.1	(18)
Unemployment rate trend(d) (%)	Dec 00	0.1	0.0	0.1	<b>0.0</b>	0.0	-0.2	0.4	0.0	(18)
Average weekly earnings (full-time adults; ordinary time) trend (%)	Aug 00	1.2	1.7	2.2	<b>1.7</b>	1.4	1.4	1.1	0.8	(22)
Secured housing finance (%)	Nov 00	18.8	11.8	10.0	<b>14.2</b>	7.8	8.9	-12.5	22.2	(24)

(a) Base year of index 1989-90 = 100.

(b) The latest quarterly estimate of Australian resident population has been used to calculate ratios for subsequent periods.

(c) Excludes alterations and additions. Includes refinancing.

(d) Change is shown in terms of percentage points.



### 3

#### STATE ACCOUNTS AT CURRENT PRICES

Period	Final consumption expenditure		Gross fixed capital formation		State final demand	Gross State product	Compensation of employees
	Households	General government	Private	Public			
ANNUAL (\$m)							
<b>1997-98</b>	24 424	7 808	6 684	1 306	40 222	39 290	18 760
<b>1998-99</b>	25 341	7 969	6 036	1 335	40 682	39 966	19 153
<b>1999-00</b>	26 503	8 360	(a)10 237	(a)-1 547	43 553	42 282	19 951
QUARTERLY, TREND (\$m)							
<b>1998-99</b>							
June	6 388	2 005	1 566	359	10 319	n.a.	4 892
<b>1999-00</b>							
September	6 477	2 017	1 652	378	10 524	n.a.	4 927
December	6 575	2 057	1 752	381	10 766	n.a.	4 961
March	6 678	2 109	1 794	366	10 945	n.a.	5 030
June	6 790	2 149	1 781	343	11 064	n.a.	5 123
<b>2000-01</b>							
September	6 924	2 171	1 754	327	11 176	n.a.	5 211

(a) The negative figure for Public gross fixed capital formation and the positive figure for Private gross fixed capital formation is the result of the sale of the South Australian electrical transmission network in December quarter 1999. For more information see *National Income, Expenditure and Product, Australian National Accounts, June 2000* (Cat. no. 5206.0).

Source: *Australian National Accounts: Quarterly State Details* (Cat. no. 5206.0.40.001), and *Australian National Accounts: State Accounts* (Cat. no. 5220.0).

### 4

#### STATE ACCOUNTS AT CHAIN VOLUME MEASURES(a)

Period	Final consumption expenditure		Gross fixed capital formation		State final demand	Gross State product
	Households	General government	Private	Public		
ANNUAL (\$m)						
<b>1997-98</b>	24 572	7 991	6 773	1 303	40 637	39 087
<b>1998-99</b>	25 341	7 969	6 036	1 336	40 682	39 966
<b>1999-00</b>	26 218	8 224	(b)10013	(b)-1456	42 999	41 381
QUARTERLY, TREND (\$m)						
<b>1998-99</b>						
June	6 365	1 991	1 566	367	10 289	n.a.
<b>1999-00</b>						
September	6 438	1 997	1 626	398	10 459	n.a.
December	6 531	2 028	1 707	405	10 670	n.a.
March	6 604	2 067	1 738	386	10 795	n.a.
June	6 652	2 093	1 720	361	10 825	n.a.
<b>2000-01</b>						
September	6 694	2 098	1 684	351	10 820	n.a.

(a) Reference year for chain volume measures is 1996-97.

(b) The negative figure for Public gross fixed capital formation and the positive figure for Private gross fixed capital formation is the result of the sale of the South Australian electrical transmission network in December quarter 1999. For more information see *National Income, Expenditure and Product, Australian National Accounts, June 2000* (Cat. no. 5206.0).

Source: *Australian National Accounts: Quarterly State Details* (Cat. no. 5206.0.40.001), and *Australian National Accounts: State Accounts* (Cat. no. 5220.0).

## 5

## MERCHANDISE EXPORTS, BY SELECTED COMMODITY GROUP(a)

<i>Period</i>	<i>Meat and meat preparations</i>	<i>Wheat</i>	<i>Wine</i>	<i>Wool and sheepskins (excl. wool tops)</i>	<i>Machinery</i>	<i>Metals and metal manufactures</i>	<i>Fish and crustaceans</i>	<i>Road vehicles, parts and accessories</i>	<i>Petroleum and petroleum products</i>	<i>Total</i>
	\$'000	\$'000	\$'000	\$'000	\$'000	\$'000	\$'000	\$'000	\$'000	\$'000
<b>1997-98</b>	218 252	446 839	564 093	287 824	401 749	574 407	236 353	479 396	237 824	4 986 705
<b>1998-99</b>	198 541	567 812	693 733	212 226	384 702	543 675	252 592	651 949	154 425	5 332 300
<b>1999-00</b>	160 483	473 086	899 348	179 716	353 205	805 744	394 375	883 792	218 466	6 188 231
<b>1998-99</b>										
June	13 274	44 468	77 522	13 202	29 477	50 927	17 824	90 638	14 832	478 816
<b>1999-00</b>										
July	11 764	27 968	60 499	10 288	29 602	53 204	30 310	41 016	16 088	441 950
August	7 777	34 802	81 661	12 680	27 056	61 903	81 050	97 193	2 428	543 384
September	10 284	52 367	100 662	15 114	37 219	57 003	57 030	59 781	17 842	556 471
October	12 408	50 939	96 166	16 327	29 940	69 728	28 318	65 627	28 792	546 911
November	13 487	7 829	54 034	16 631	31 130	70 076	26 161	141 478	3 439	502 798
December	12 091	73 023	50 412	13 568	26 925	71 545	21 104	179 287	19 102	618 005
January	11 676	42 774	46 507	9 949	20 727	49 340	24 759	24 514	17 151	381 964
February	15 413	42 027	61 522	14 350	26 925	77 412	19 371	44 842	26 572	499 394
March	16 203	37 670	81 909	15 355	31 158	75 803	21 515	80 430	26 155	560 304
April	15 688	48 190	81 644	13 701	26 242	69 225	28 678	21 432	27 316	484 156
May	16 988	31 684	93 800	20 262	33 529	69 203	27 111	64 861	3 473	488 743
June	16 704	23 814	90 533	21 491	32 751	81 301	28 968	63 329	30 107	564 152
<b>2000-01</b>										
July	17 198	19 207	91 473	18 494	31 670	66 891	37 243	113 052	28 523	569 061
August	12 891	34 504	91 522	13 905	32 251	54 268	117 598	119 950	12 106	643 970
September	21 118	66 366	110 861	17 429	29 031	96 609	66 255	137 895	49 737	761 666
October	23 169	31 594	103 965	26 184	29 374	93 512	17 387	66 730	12 221	557 403
November	20 913	34 303	65 555	24 623	39 634	92 383	25 803	98 622	37 471	603 906

(a) Restrictions are placed on the release of statistics for certain commodities for reasons of confidentiality. These restrictions do not affect total export and import figures, but they can affect some items within commodity, industry and country tables. See *International Trade* (Cat. no. 5422.0), Explanatory Notes, paragraph 30, for more details.

Source: Unpublished data, *International Merchandise Trade*.

## 6

## MERCHANDISE EXPORTS, BY SELECTED COUNTRIES AND COUNTRY GROUPS

Period	European Union					South-East and North-East Asia				
	United States of America	Middle East	United Kingdom	Total European Union	New Zealand	Japan	China	Hong Kong	ASEAN	Total
	\$'000	\$'000	\$'000	\$'000	\$'000	\$'000	\$'000	\$'000	\$'000	\$'000
<b>1997-98</b>	632 203	389 766	424 251	849 932	354 698	612 475	331 489	239 652	491 573	2 023 385
<b>1998-99</b>	705 166	640 412	476 340	928 468	385 513	625 530	302 776	219 536	432 730	1 898 837
<b>1999-00</b>	954 681	724 871	625 154	1 073 928	446 026	787 295	315 199	255 679	492 304	2 297 913
<b>1998-99</b>										
June	98 299	38 031	49 708	80 488	47 036	54 060	22 775	13 782	47 319	159 292
<b>1999-00</b>										
July	54 593	31 570	39 127	80 383	39 266	72 253	16 859	15 394	27 998	162 944
August	87 288	50 910	58 622	101 012	46 379	104 035	18 156	13 326	36 480	202 395
September	57 055	41 511	73 174	112 056	44 181	94 402	31 426	22 587	43 853	214 621
October	46 383	80 029	78 330	117 681	49 572	62 459	32 529	25 385	40 020	203 079
November	102 334	82 481	33 828	67 501	40 223	36 313	31 053	22 591	46 641	169 668
December	147 939	130 984	36 575	76 383	37 356	40 148	14 457	27 195	40 711	171 092
January	40 261	53 129	30 102	63 379	22 005	37 506	20 084	29 260	25 167	142 744
February	55 875	71 510	42 617	73 030	44 832	48 221	41 265	20 241	38 646	206 501
March	131 298	24 442	53 267	87 039	37 877	65 469	43 237	26 342	41 680	215 769
April	68 381	66 629	58 962	99 714	19 524	63 008	21 328	20 398	39 863	187 566
May	101 180	30 245	64 293	101 411	23 024	53 701	19 306	14 037	49 465	173 766
June	62 092	61 433	56 258	94 338	41 788	109 779	25 500	18 924	61 779	247 770
<b>2000-01</b>										
July	100 237	65 100	55 658	85 089	34 853	85 633	24 427	23 112	51 101	216 245
August	128 951	59 559	66 643	101 217	32 645	157 532	22 980	12 572	45 178	262 413
September	96 293	108 823	86 998	136 679	38 978	142 299	23 237	24 958	66 957	292 566
October	57 384	61 372	84 659	128 716	41 830	39 842	42 666	18 484	59 834	197 498
November	141 223	54 028	29 838	58 615	52 126	55 656	54 027	37 570	54 241	248 797

Source: Unpublished data, International Merchandise Trade.

## 7

## MERCHANDISE EXPORTS, BY INDUSTRY OF ORIGIN(a)

Period	Manufacturing								Total
	Agriculture, forestry and fishing(b)	Mining	Food, beverages and tobacco	Petroleum, coal, chemical associated product	Metal product	Machinery and equipment	Other manufacturing	Other industries/confidential	
	\$'000	\$'000	\$'000	\$'000	\$'000	\$'000	\$'000	\$'000	\$'000
<b>1997-98</b>	1 188 938	137 851	1 205 265	292 175	615 344	994 597	262 815	289 719	4 986 705
<b>1998-99</b>	1 352 378	73 125	1 282 013	285 053	581 372	1 172 362	264 973	321 024	5 332 300
<b>1999-00</b>	934 944	135 461	1 517 721	369 480	837 235	1 412 721	256 771	723 899	6 188 231
<b>1998-99</b>									
June	89 505	3 320	122 939	26 617	54 826	132 292	19 834	29 484	478 816
<b>1999-00</b>									
July	82 083	7 380	120 642	26 813	54 441	84 369	19 700	46 522	441 950
August	86 698	9 096	118 366	14 845	63 726	139 131	23 206	88 315	543 384
September	74 415	1 155	168 993	30 754	60 553	115 282	20 174	85 146	556 471
October	85 540	19 297	143 971	40 142	71 232	110 813	24 368	51 548	546 911
November	41 532	7 772	97 497	16 152	72 647	185 987	22 701	58 511	502 798
December	102 230	23 130	86 989	34 314	75 511	220 588	20 718	54 524	618 005
January	81 352	1 897	92 547	26 226	50 560	54 575	17 884	56 923	381 964
February	69 558	20 910	110 729	39 201	81 114	87 688	21 193	69 001	499 394
March	91 256	1 157	136 228	40 091	78 579	127 314	23 185	62 493	560 304
April	77 966	20 118	140 525	40 372	71 716	62 360	19 912	51 186	484 156
May	73 998	1 208	148 640	16 480	72 947	113 986	20 553	40 930	488 743
June	68 317	22 340	152 594	44 089	84 209	110 627	23 176	58 799	564 152
<b>2000-01</b>									
July	65 147	6 159	162 950	42 580	71 223	160 095	22 674	38 234	569 061
August	71 391	3 238	181 068	25 595	59 116	168 799	21 156	113 607	643 970
September	93 787	28 341	216 291	64 820	98 048	183 567	20 821	55 991	761 666
October	73 874	9 037	155 234	23 950	96 272	114 520	23 545	60 972	557 403
November	75 576	1 018	121 244	49 509	96 409	154 722	20 045	85 381	603 906

(a) Restrictions are placed on the release of statistics for certain commodities for reasons of confidentiality. These restrictions do not affect total export and import figures, but they can affect some items within commodity, industry and country tables. See *International Trade* (Cat. no. 5422.0), Explanatory Notes, paragraph 30, for more details.

(b) Bulk barley details are only included in this item for periods prior to September 1999. Due to confidentiality restrictions bulk barley is included in 'Other industries/confidential' from September 1999 onwards.

Source: Unpublished data, *International Merchandise Trade*.

## 8

## MERCHANDISE IMPORTS, BY SELECTED COMMODITY GROUP(a)

<i>Period</i>	<i>Food, beverages and tobacco</i>	<i>Petroleum and petroleum products</i>	<i>Chemicals</i>	<i>Textiles</i>	<i>Metals and metal manufactures</i>	<i>Machinery</i>	<i>Road vehicle parts and accessories</i>	<i>Other manufactured goods</i>	<i>Total</i>
	\$'000	\$'000	\$'000	\$'000	\$'000	\$'000	\$'000	\$'000	\$'000
<b>1997-98</b>	148 771	445 218	274 741	93 815	280 562	1 061 260	772 203	739 266	3 940 198
<b>1998-99</b>	162 784	271 492	281 097	96 052	264 732	917 879	812 096	765 643	3 716 152
<b>1999-00</b>	163 509	515 641	263 959	97 100	262 737	1 164 672	834 842	845 913	4 319 348
<b>1998-99</b>									
June	12 748	22 304	15 461	7 490	19 168	72 618	67 354	71 583	301 272
<b>1999-00</b>									
July	14 835	58 324	16 552	8 454	19 097	82 015	78 647	64 793	355 421
August	12 100	27 827	14 014	8 245	19 964	80 979	72 125	65 350	311 678
September	15 546	92	17 923	8 064	20 812	104 051	68 466	73 988	320 308
October	16 262	42 269	14 472	7 989	19 249	81 573	71 316	69 205	332 726
November	19 706	81 584	18 593	7 803	20 635	75 748	59 410	73 473	369 548
December	15 031	73 789	25 809	6 376	22 494	120 636	49 107	69 831	395 215
January	11 042	40 216	27 862	6 948	20 703	71 575	56 419	61 667	309 362
February	13 633	36 561	17 170	7 363	22 138	149 008	62 560	74 495	403 840
March	10 534	23 846	36 835	8 774	24 635	100 622	77 585	73 811	376 965
April	8 677	49 022	23 130	9 829	23 748	78 906	63 183	59 870	330 807
May	12 970	150	26 399	8 829	25 235	103 045	93 658	89 393	376 376
June	13 173	81 962	25 199	8 426	24 025	116 514	82 365	70 038	437 101
<b>2000-01</b>									
July	12 672	12 429	15 366	7 477	27 313	81 141	88 021	64 441	323 578
August	15 478	105 525	18 815	10 427	31 299	84 295	85 147	100 451	466 221
September	14 648	112 111	16 617	7 996	26 072	92 737	69 757	74 851	426 842
October	19 561	20	16 312	9 911	29 345	100 092	77 612	76 290	343 505
November	19 529	186 246	16 041	7 366	30 372	107 256	79 998	84 404	552 892

(a) Restrictions are placed on the release of statistics for certain commodities for reasons of confidentiality. These restrictions do not affect total export and import figures, but they can affect some items within commodity, industry and country tables. See *International Trade* (Cat. no. 5422.0), Explanatory Notes, paragraph 30, for more details.

Source: Unpublished data, *International Merchandise Trade*.

## 9

## TURNOVER OF RETAIL ESTABLISHMENTS, BY INDUSTRY—SEASONALLY ADJUSTED(a)

Period	Food retailing	Department stores	Clothing and soft good retailing	Household good retailing	Recreational good retailing	Other retailing	Hospitality and services	Total
	\$m	\$m	\$m	\$m	\$m	\$m	\$m	\$m
<b>1999-00</b>								
September	380.3	92.7	53.2	91.6	33.0	89.2	149.4	889.4
October	377.6	93.2	52.7	92.9	29.4	89.2	159.1	894.0
November	381.5	94.7	52.9	94.5	32.1	93.4	154.3	903.4
December	377.9	90.7	53.8	87.9	33.6	94.2	149.9	888.0
January	369.9	92.2	48.3	92.5	28.0	91.2	165.2	887.3
February	375.7	90.5	48.8	91.2	29.3	92.9	160.0	888.4
March	382.1	92.8	46.6	96.3	30.3	94.5	157.3	899.8
April	392.6	93.5	46.4	92.3	27.0	90.4	147.1	889.3
May	396.8	94.5	50.3	99.1	26.1	91.9	148.4	907.1
June	392.3	111.1	56.9	115.8	26.3	94.4	151.9	948.7
<b>2000-01</b>								
July	379.1	75.4	41.7	92.0	26.5	95.9	160.1	870.7
August	388.1	93.9	46.1	99.1	26.2	102.7	170.0	926.0
September	384.5	94.6	50.5	97.4	25.4	105.7	166.4	924.4
October	380.9	89.8	47.8	95.5	23.7	113.0	167.9	918.6
November	391.9	91.4	51.6	104.2	26.2	113.5	177.6	956.3

(a) The retail trend series in current price terms has been replaced by seasonally adjusted data. For more information see Changes in this Issue or Retail Trade, Australia, November 2000 (Cat. no. 8501.0).

Source: Retail Trade, Australia (Cat. no. 8501.0).

## 10

## NEW MOTOR VEHICLE REGISTRATIONS, BY TYPE OF VEHICLE

Period	Original			Seasonally adjusted			Trend estimate(a)		
	Passenger vehicles	Other vehicles	Total	Passenger vehicles	Other vehicles	Total	Passenger vehicles	Other vehicles	Total
<b>1999-00</b>									
September	3 120	531	3 651	3 039	559	3 598	3 149	695	3 844
October	2 983	676	3 659	3 027	797	3 824	3 210	690	3 900
November	3 656	679	4 335	3 423	684	4 107	3 276	676	3 952
December	3 729	694	4 423	3 553	627	4 180	3 327	655	3 982
January	2 462	464	2 926	3 265	617	3 882	3 296	635	3 931
February	3 269	599	3 868	3 315	635	3 950	3 184	622	3 806
March	3 289	705	3 994	3 007	622	3 629	3 055	614	3 669
April	2 400	500	2 900	2 825	564	3 389	2 987	612	3 599
May	3 171	725	3 896	3 142	637	3 779	3 034	621	3 655
June	2 720	943	3 663	2 200	658	2 858	3 008	618	3 626
<b>2000-01</b>									
July	4 078	538	4 616	4 128	569	4 697	3 740	610	4 350
August	3 956	582	4 538	3 790	580	4 370	3 722	599	4 321
September	3 547	591	4 138	3 655	638	4 303	3 704	586	4 290
October	3 747	494	4 241	3 787	571	4 358	3 692	572	4 264
November	3 997	537	4 534	3 657	519	4 176	3 672	555	4 227

(a) Trend estimates for May 2000 to October 2000 have been revised. For more information see New Motor Vehicle Registrations, Australia, Preliminary (Cat. no. 9301.0).

Source: New Motor Vehicle Registrations, Australia, Preliminary (Cat. no. 9301.0) and unpublished data.

# 11

## ACTUAL PRIVATE NEW CAPITAL EXPENDITURE, BY SELECTED INDUSTRY AND TYPE OF ASSET

Period	Industry			Total	Type of asset	
	Mining	Manufacturing	Other selected industries		New buildings and structures	Equipment, plant and machinery
ANNUAL (\$m)						
<b>1997-98</b>	1 366	820	1 006	3 192	792	2 400
<b>1998-99</b>	508	776	993	2 277	529	1 748
<b>1999-00</b>	242	853	1 355	2 451	619	1 832
QUARTERLY, ORIGINAL (\$m)						
<b>1998-99</b>						
June	136	188	180	504	103	401
<b>1999-00</b>						
September	71	163	391	625	125	500
December	50	232	249	530	117	413
March	55	208	341	603	157	446
June	67	251	375	692	220	472
<b>2000-01</b>						
September	81	215	288	585	176	409
QUARTERLY, TREND (\$m)						
<b>1998-99</b>						
June	n.a.	n.a.	n.a.	549	107	442
<b>1999-00</b>						
September	n.a.	n.a.	n.a.	558	109	449
December	n.a.	n.a.	n.a.	586	135	451
March	n.a.	n.a.	n.a.	619	166	453
June	n.a.	n.a.	n.a.	644	190	454
<b>2000-01</b>						
September	n.a.	n.a.	n.a.	668	201	467

Source: State Estimates of Private New Capital Expenditure (Cat. no. 5646.0).

# 12

## TOURIST ACCOMMODATION

Period	Hotels with facilities				Motels and guesthouses				Serviced apartments			
	Estab-lish-ments	Guest rooms	Room occu-pancy	Takings	Estab-lish-ments	Guest rooms	Room occu-pancy	Takings	Estab-lish-ments	Guest rooms	Room occu-pancy	Takings
	no.	no.	%	\$'000	no.	no.	%	\$'000	no.	no.	%	\$'000
<b>1998-99</b>												
September	61	4 048	57.2	21 068	146	5 112	51.7	17 805	19	740	56.3	3 667
December	61	4 053	63.0	24 954	146	5 135	58.1	19 990	22	888	66.0	4 884
March	61	4 053	59.6	22 181	145	5 119	55.3	18 793	22	888	65.8	4 516
June	62	4 095	58.6	22 362	146	5 189	51.5	18 140	22	889	54.1	3 947
<b>1999-00</b>												
September	62	3 988	58.0	20 959	146	5 175	50.7	17 812	23	1 084	60.2	5 265
December	62	4 090	61.6	24 619	146	5 166	55.1	19 928	26	1 207	61.5	6 462
March	62	4 065	60.1	23 738	146	5 168	55.3	19 956	26	1 213	62.6	6 739
June	60	4 037	58.7	23 033	147	5 212	53.1	19 309	26	1 208	62.7	6 912
<b>2000-01</b>												
September	60	4 070	56.3	22 888	147	5 218	50.6	19 548	26	1 211	56.9	6 156

Source: Tourist Accommodation, Australia (Cat. no. 8635.0).

Period	Houses		Total dwelling units		New residential building \$m	Alterations and additions to residential building \$m	Total residential building \$m	Non-residential building \$m	Total building \$m
	Private sector	Total	Private sector	Total					
	no.	no.	no.	no.					
ANNUAL									
<b>1997-98</b>	6187	6380	6997	7215	630.2	127.7	758.0	602.2	1360.1
<b>1998-99</b>	6568	6777	7697	7928	775.6	144.0	919.6	670.9	1590.5
<b>1999-00</b>	8290	8392	9915	10024	1022.9	188.9	1211.8	585.7	1797.5
MONTHLY, ORIGINAL									
<b>1999-00</b>									
September	731	772	866	907	88.5	15.9	104.3	49.2	153.5
October	667	681	777	794	79.6	14.0	93.7	31.6	125.2
November	892	904	981	993	101.4	15.5	116.9	36.2	153.1
December	736	736	842	842	85.8	13.4	99.2	129.5	228.8
January	649	649	783	783	69.7	25.4	95.1	18.5	113.6
February	836	838	1071	1073	111.8	18.7	130.5	43.3	173.9
March	807	809	972	974	99.7	15.8	115.5	59.0	174.5
April	561	565	635	643	64.9	11.8	76.7	58.7	135.3
May	616	625	795	804	79.5	17.3	96.8	66.1	162.9
June	517	524	591	598	63.9	11.5	75.4	24.3	99.7
<b>2000-01</b>									
July	443	461	689	710	83.5	9.3	92.8	60.6	153.4
August	450	465	507	522	57.8	11.9	69.7	89.6	159.3
September	353	353	409	409	42.1	12.6	54.7	29.4	84.1
October	434	434	510	514	55.6	13.1	68.7	45.3	114.0
November	458	462	650	661	63.4	15.0	78.3	48.2	126.6
MONTHLY, TREND									
<b>1999-00</b>									
September	683	700	795	813	81.8	14.1	95.9	37.7	133.6
October	746	761	863	879	86.8	15.4	102.1	37.6	139.7
November	804	815	935	946	92.0	17.1	109.1	37.0	146.1
December	842	849	991	998	96.6	18.8	115.5	37.9	153.3
January	846	849	1011	1014	98.8	19.9	118.6	40.2	158.8
February	812	813	983	985	97.4	19.8	117.2	42.9	160.1
March	747	749	916	919	92.7	18.4	111.1	46.4	157.6
April	659	664	820	826	85.4	16.1	101.5	50.0	151.5
May	567	575	709	718	76.2	13.7	89.9	52.6	142.5
June	490	500	613	624	67.4	12.0	79.4	53.4	132.8
<b>2000-01</b>									
July	440	450	547	558	60.5	11.5	72.0	52.7	124.7
August	411	420	509	519	56.0	11.4	67.4	51.5	119.0
September	397	404	491	500	53.3	11.4	64.7	50.4	115.2
October	391	396	489	497	51.8	11.6	63.4	48.9	112.4
November	400	402	506	512	52.0	11.9	63.9	48.0	111.9

Source: Building Approvals, Australia (Cat. no. 8731.0); Unpublished data, Building Approvals.



## 14

## BUILDING COMMENCEMENTS

Period	New houses		Total dwelling units(a)		New residential building \$m	Alterations and additions to residential building \$m	Non-residential building		
	Private sector	Total	Private sector	Total			Private sector	Total	Total building
	no.	no.	no.	no.			\$m	\$m	\$m
<b>1997-98</b>	5 628	5 823	6,437	6,653	614.7	134.5	426.4	550.7	1 299.9
<b>1998-99</b>	6 092	6 297	7,186	7,416	771.3	139.7	400.7	624.3	1 535.3
<b>1999-00</b>	7 729	7 856	9,266	9,410	1 044.8	198.8	351.2	576.8	1 820.5
<b>1998-99</b>									
September	1 563	1 610	1,927	1,980	184.7	35.0	89.5	131.1	350.7
December	1 644	1 699	1,891	1,965	231.1	34.3	94.6	134.8	400.2
March	1 293	1 326	1,612	1,645	171.6	32.7	145.6	235.5	439.8
June	1 591	1 661	1,756	1,826	183.9	37.8	71.0	122.9	344.6
<b>1999-00</b>									
September	1 752	1 792	2,116	2,166	251.2	42.6	84.1	109.3	403.1
December	1 947	2 007	2,264	2,327	250.9	45.2	92.7	132.2	428.3
March	2 054	2 064	2,534	2,544	284.9	52.1	70.8	182.9	519.9
June	1 977	1 994	2,353	2,374	257.8	58.9	103.6	152.5	469.2
<b>2000-01</b>									
September	1 395	1 434	1,782	1,824	228.1	25.2	103.5	162.5	415.7

(a) Includes conversions.

Source: Building Activity, Australia (Cat. no. 8752.0).

## VALUE OF BUILDING WORK DONE AND COMPLETED DURING PERIOD

Period	New houses		New residential building		Alterations and additions to residential building	Total residential building	Non-residential building		Total building	
	Private sector	Total	Private sector	Total			Private sector	Total	Private sector	Total
	\$m	\$m	\$m	\$m	\$m	\$m	\$m	\$m	\$m	\$m
VALUE OF BUILDING WORK DONE										
<b>1997-98</b>	522.9	535.7	590.4	605.4	131.6	737.0	538.9	685.0	1259.3	1422.0
<b>1998-99</b>	599.4	614.6	720.8	737.7	147.7	885.4	417.1	571.6	1283.8	1457.0
<b>1999-00</b>	798.1	812.2	984.5	999.9	195.5	1195.4	409.9	629.4	1585.1	1824.8
<b>1998-99</b>										
September	150.9	155.8	175.8	180.9	39.8	220.7	135.5	162.9	350.5	383.6
December	151.4	155.1	185.6	189.9	40.3	230.1	121.5	160.4	347.0	390.6
March	142.4	144.9	169.5	172.5	33.2	205.7	87.5	131.1	290.1	336.8
June	154.7	158.9	189.9	194.4	34.4	228.9	72.6	117.2	296.2	346.1
<b>1999-00</b>										
September	166.8	171.9	212.6	218.4	41.3	259.8	116.7	171.5	369.4	431.3
December	187.5	192.0	227.3	232.1	46.8	278.9	101.0	149.2	374.2	428.1
March	193.0	196.1	239.4	242.6	47.2	289.9	86.3	145.3	372.4	435.2
June	250.8	252.2	305.1	306.8	60.1	366.9	105.9	163.3	469.1	530.2
<b>2000-01</b>										
September	175.8	178.0	228.0	230.2	30.8	261.0	84.2	137.1	341.5	398.1
VALUE OF BUILDING WORK COMPLETED										
<b>1997-98</b>	504.1	514.7	561.8	574.7	125	699.7	571.2	744	1256.3	1443.7
<b>1998-99</b>	600.6	614.8	700	715.2	153.2	868.4	505.3	639.4	1356.8	1507.8
<b>1999-00</b>	713.5	730.1	867.6	886.2	191.9	1078.1	362.9	538.4	1419.4	1616.4
<b>1998-99</b>										
September	148.1	152.4	161.1	165.8	36.1	201.9	68.2	106.7	264.9	308.6
December	168.4	174.1	190.2	196.1	49.3	245.4	174.9	203.3	414.1	448.7
March	145.1	147.6	180.1	183.0	36.7	219.7	161.2	207.4	377.8	427.1
June	139.0	140.7	168.6	170.3	31.0	201.4	101.0	122.0	300.0	323.3
<b>1999-00</b>										
September	148.9	154.7	170.2	177.7	38.5	216.2	67.9	104.1	275.4	320.2
December	190.6	195.1	221.7	226.5	45.5	272.0	124.7	161.8	391.3	433.8
March	156.0	160.2	177.8	182.0	42.2	224.2	100.8	150.4	320.0	374.6
June	217.9	220.1	297.9	300.1	65.7	365.8	69.6	122.0	432.8	487.8
<b>2000-01</b>										
September	176.1	176.8	199.8	200.7	30.8	231.5	133.6	161.1	363.1	392.7

Source: Building Activity, Australia (Cat. no. 8752.0).

<i>Period</i>	<i>Pigmeat</i>	<i>Beef</i>	<i>Mutton</i>	<i>Lamb</i>	<i>Gas</i>	<i>Coal(a)</i>	<i>Sawn timber(b)</i>
	<i>tonnes</i>	<i>tonnes</i>	<i>tonnes</i>	<i>tonnes</i>	<i>m MJ</i>	<i>tonnes</i>	<i>m<sup>3</sup></i>
<b>1997-98</b>	28 489	80 924	58 554	38 224	78 441	2 815 870	361 257
<b>1998-99</b>	30 864	62 266	48 029	44 173	86 228	2 686 069	374 590
<b>1999-00</b>	31 927	78 001	28 970	56 668	87 442	2 920 944	425 549
<b>1998-99</b>							
September	6 782	15 160	10 348	10 738	23 573	748 575	95 339
December	7 269	17 609	15 737	10 997	19 718	671 040	94 578
March	8 031	14 780	14 029	10 101	19 343	826 095	88 282
June	8 782	14 717	7 915	12 337	23 594	440 359	96 391
<b>1999-00</b>							
September	7 294	17 107	5 654	11 492	22 162	783 227	111 075
December	7 504	18 401	8 714	11 944	20 992	684 296	93 802
March	8 245	21 743	8 810	14 475	21 790	747 472	112 949
June	8 884	20 750	5 792	18 757	22 498	705 949	107 723
<b>2000-01</b>							
September	8 227	18 011	8 072	15 785	24 437	n.y.a.	126 440

(a) Data supplied by Flinders Power Pty Ltd.

(b) From Australian softwood logs only.

Source: *Livestock Products, Australia* (Cat. no. 7215.0); *Unpublished data, Manufacturing Production*.

<i>Period</i>	<i>Food</i>	<i>Alcohol and tobacco</i>	<i>Clothing and footwear(a)</i>	<i>Housing (b)</i>	<i>House furnishings, supplies and services(b)</i>	<i>Health (c)</i>	<i>Transportation(b)</i>	<i>Communication(a)</i>	<i>Recreation(c)</i>	<i>Education(b)</i>	<i>Miscellaneous(c)</i>	<i>All groups</i>
ANNUAL AVERAGE (1989–90 = 100.0)												
<b>1997–98</b>	n.a.	n.a.	n.a.	n.a.	n.a.	n.a.	n.a.	n.a.	n.a.	n.a.	n.a.	121.6
<b>1998–99</b>	127.7	171.8	105.0	92.0	113.3	176.0	121.6	101.9	117.9	204.8	142.7	123.2
<b>1999–00</b>	130.8	179.1	103.3	97.0	112.9	165.7	129.4	97.7	119.1	215.8	148.8	126.3
QUARTERLY (1989–90 = 100.0)												
<b>1998–99</b>												
June	128.8	173.3	105.7	92.8	113.2	164.5	122.4	100.0	118.9	210.8	142.6	123.6
<b>1999–00</b>												
September	129.7	174.4	104.8	95.0	112.5	164.5	127.8	97.7	119.7	210.8	143.2	125.1
December	130.4	177.8	102.5	96.9	112.7	163.7	127.4	97.2	119.7	210.8	147.4	125.7
March	131.2	181.6	101.9	97.9	112.9	166.7	130.4	97.0	118.5	220.7	150.6	126.8
June	131.9	182.5	104.0	98.3	113.4	167.9	131.9	98.7	118.6	220.7	153.9	127.6
<b>2000–01</b>												
September	133.8	193.4	113.6	103.9	116.0	168.5	136.8	105.5	122.7	220.9	157.8	132.3
PERCENTAGE CHANGE FROM SAME QUARTER OF PREVIOUS YEAR												
<b>1998–99</b>												
June	n.a.	n.a.	n.a.	n.a.	n.a.	n.a.	n.a.	n.a.	n.a.	n.a.	n.a.	n.a.
<b>1999–00</b>												
September	3.0	2.2	-0.5	4.2	-1.1	-12.6	4.6	-6.1	2.6	6.0	1.0	1.7
December	1.7	3.7	-2.8	5.4	-1.1	-12.6	5.0	-5.9	2.0	6.0	2.8	1.7
March	2.5	5.7	-1.7	6.2	0.5	1.7	7.9	-3.2	-0.1	4.7	5.2	3.3
June	2.4	5.3	-1.6	5.9	0.2	2.1	7.8	-1.3	-0.3	4.7	7.9	3.2
<b>2000–01</b>												
September	3.2	10.9	8.4	9.4	3.1	2.4	7.4	8.0	2.5	4.8	10.2	5.8
PERCENTAGE CHANGE FROM PREVIOUS QUARTER												
<b>1998–99</b>												
June	n.a.	n.a.	n.a.	n.a.	n.a.	n.a.	n.a.	n.a.	n.a.	n.a.	n.a.	n.a.
<b>1999–00</b>												
September	0.7	0.6	-0.9	2.4	-0.6	0.0	4.1	-2.3	0.7	0.0	0.4	1.2
December	0.5	1.9	-2.2	2.0	0.2	-0.5	-0.3	-0.5	0.0	0.0	2.9	0.5
March	0.6	2.1	-0.6	1.0	0.2	1.8	2.4	-0.2	-1.0	4.7	2.2	0.9
June	0.5	0.5	2.1	0.4	0.4	0.7	1.2	1.8	0.1	0.0	2.2	0.6
<b>2000–01</b>												
September	1.4	6.0	9.2	5.7	2.3	0.4	3.7	6.9	3.5	0.1	2.5	3.7

(a) Series renamed only (linked to the 13th series equivalent). See Appendix A2 of *Consumer Price Index* (Cat. no. 6401.0) for more details.

(b) Minor change to composition and in some cases series renamed (linked to the 13th series equivalent). See Appendix A2 of *Consumer Price Index* (Cat. no. 6401.0) for more details.

(c) New series, part or combination of previously published series. See Appendix A2 of *Consumer Price Index* (Cat. no. 6401.0) for more details.

Source: *Consumer Price Index* (Cat. no. 6401.0).

# 18

## ESTIMATED RESIDENT POPULATION AND COMPONENTS OF POPULATION CHANGE

Period	Net migration			Total increase	Population at end of period
	Natural increase	Interstate	Overseas(a)		
<b>1997-98</b>	6 602	-3 254	3 390	6 728	1 486 418
<b>1998-99</b>	6 751	-2 869	2 108	5 990	1 492 408
<b>1999-00</b>	6 546	-4 773	3 453	5 226	1 497 634
<b>1997-98</b>					
June	1 471	-810	551	1 212	1 486 418
<b>1998-99</b>					
September	1 188	-422	778	1 544	1 487 661
December	1 775	-901	707	1 581	1 489 906
March	1 917	-682	1 149	2 384	1 491 391
June	1 713	-864	298	1 147	1 492 408
<b>1999-00</b>					
September	1 515	-600	784	1 699	1 494 315
December	1 540	-1 291	808	1 057	1 496 207
March	1 998	-1 735	662	925	1 497 132
June	1 493	-1 147	156	502	1 497 634

(a) Includes category jumping.

Source: Australian Demographic Statistics (Cat. no. 3101.0).

# 19

## BIRTHS, DEATHS, MARRIAGES AND DIVORCES

Period	Registrations			
	Births	Deaths	Marriages	Divorces
<b>1997-98</b>	18 330	11 728	7 988	4 113
<b>1998-99</b>	18 399	11 648	8 034	4 191
<b>1999-00</b>	18 035	11 489	8 428	4 179
<b>1997-98</b>				
June	4 479	3 008	1 824	1 005
<b>1998-99</b>				
September	4 722	3 443	1 294	1 053
December	4 524	2 804	2 499	1 085
March	4 594	2 494	2 472	919
June	4 559	2 907	1 769	1 134
<b>1999-00</b>				
September	4 722	3 207	1 259	1 058
December	4 139	2 599	2 737	1 190
March	4 759	2 761	2 436	965
June	4 415	2 922	1 996	984

Source: Australian Demographic Statistics (Cat. no. 3101.0).

Period	Employed full-time		Employed part-time		Total employed		Unemployed		Labour force	
	Males	Females	Males	Females	Males	Females	Males	Females	Males	Females
ANNUAL AVERAGE ('000)										
<b>1997-98</b>	317.5	145.9	48.8	136.4	366.3	282.3	42.1	28.8	408.4	311.0
<b>1998-99</b>	319.4	148.1	49.2	136.2	368.6	284.3	40.2	26.6	408.8	310.9
<b>1999-00</b>	321.9	152.4	55.9	141.4	377.8	293.9	35.3	25.0	413.0	318.9
MONTHLY, ORIGINAL ('000)										
<b>1999-00</b>										
October	313.7	153.7	59.4	138.8	373.1	292.5	37.4	25.0	410.5	317.5
November	317.5	153.7	55.0	146.7	372.5	300.4	34.4	21.5	406.8	321.9
December	326.8	160.3	59.7	145.3	386.6	305.6	35.0	24.2	421.6	329.8
January	317.4	147.6	56.7	144.4	374.1	292.1	36.8	24.9	410.9	317.0
February	328.4	154.9	52.6	136.7	381.0	291.5	38.1	30.4	419.2	322.0
March	327.6	152.5	55.8	141.7	383.4	294.2	33.0	26.8	416.3	321.0
April	325.6	149.9	56.9	143.9	382.5	293.9	35.2	25.4	417.7	319.3
May	323.3	148.0	55.8	142.8	379.1	290.9	38.3	24.9	417.4	315.8
June	328.9	154.6	52.1	137.6	380.9	292.2	33.5	22.3	414.5	314.6
<b>2000-01</b>										
July	332.2	155.9	52.2	140.8	384.4	296.7	31.3	22.3	415.7	319.0
August	327.7	158.2	54.5	138.4	382.2	296.6	31.9	22.9	414.1	319.5
September	329.1	162.1	53.2	139.8	382.4	301.9	33.8	22.4	416.2	324.3
October	327.7	157.4	54.4	142.0	382.1	299.3	31.7	19.7	413.8	319.1
November	326.9	157.1	51.8	141.5	378.7	298.6	32.5	21.4	411.3	320.0
December	328.7	159.3	50.6	142.6	379.2	301.9	33.2	21.0	412.4	322.9
MONTHLY, TREND ('000)										
<b>1999-00</b>										
October	315.8	152.8	58.3	142.1	374.1	294.9	35.1	24.9	409.2	319.8
November	316.9	152.9	58.5	143.5	375.4	296.4	35.0	24.6	410.4	321.0
December	319.2	152.6	58.1	144.6	377.3	297.2	34.8	24.6	412.1	321.8
January	322.1	152.1	57.1	144.7	379.2	296.8	34.7	24.9	413.9	321.7
February	325.0	151.5	55.7	144.1	380.7	295.6	35.0	25.1	415.7	320.7
March	327.2	151.3	54.5	142.7	381.7	294.0	35.4	25.3	417.1	319.3
April	328.7	151.7	53.5	141.3	382.2	293.0	35.8	25.3	418.0	318.3
May	329.3	153.1	53.1	140.1	382.4	293.2	35.9	24.9	418.3	318.1
June	329.5	155.1	53.1	139.4	382.6	294.5	35.4	24.2	418.0	318.7
<b>2000-01</b>										
July	329.2	157.0	53.5	139.1	382.7	296.1	34.5	23.5	417.2	319.6
August	328.7	158.3	53.8	139.1	382.5	297.4	33.5	22.9	416.0	320.3
September	328.0	158.8	53.7	139.1	381.7	297.9	32.8	22.5	414.5	320.4
October	326.9	158.5	53.6	139.5	380.5	298.0	32.3	22.1	412.8	320.1
November	325.6	157.9	53.4	139.9	379.0	297.8	32.1	21.8	411.1	319.6
December	324.2	156.7	53.2	140.7	377.4	297.4	32.1	21.6	409.5	319.0

(a) Population aged 15 and over.

Source: Labour Force, Australia, Preliminary (Cat. no. 6202.0).

# 21

## CIVILIAN LABOUR FORCE, UNEMPLOYMENT AND PARTICIPATION RATES(a)

Period	Civilian population			Unemployment rate			Participation rate		
	Males aged 15 and over	Females aged 15 and over	Persons aged 15-19	Males aged 15 and over	Females aged 15 and over	Persons aged 15 and over	Males	Females	Persons
	'000	'000	%	%	%	%	%	%	%
ANNUAL AVERAGE									
<b>1997-98</b>	583.9	604.5	23.2	10.3	9.2	9.8	70.8	51.5	61.0
<b>1998-99</b>	583.2	609.8	21.7	9.8	8.6	9.3	70.1	51.0	60.3
<b>1999-00</b>	636.8	665.1	22.1	9.2	8.4	8.9	76.2	56.3	65.0
MONTHLY, ORIGINAL									
<b>1999-00</b>									
October	586.8	613.3	21.1	9.1	7.9	8.6	70.0	51.8	60.7
November	587.1	613.6	22.1	8.5	6.7	7.7	69.3	52.5	60.7
December	587.5	613.8	20.0	8.3	7.3	7.9	71.8	53.7	62.5
January	587.8	614.0	21.8	9.0	7.8	8.5	69.9	51.6	60.6
February	588.1	614.2	23.3	9.1	9.5	9.3	71.3	52.4	61.6
March	588.4	614.4	22.0	7.9	8.4	8.1	70.8	52.3	61.3
April	588.8	614.7	19.3	8.4	8.0	8.2	70.9	51.9	61.2
May	589.2	614.9	19.4	9.2	7.9	8.6	70.8	51.4	60.9
June	589.6	615.2	17.5	8.1	7.1	7.7	70.3	51.1	60.5
<b>2000-01</b>									
July	590.0	615.5	15.1	7.5	7.0	7.3	70.5	51.8	61.0
August	590.4	615.8	20.5	7.7	7.2	7.5	70.1	51.9	60.8
September	590.7	616.0	17.6	8.1	6.9	7.6	70.4	52.6	61.4
October	591.0	616.3	16.9	7.7	6.2	7.0	70.0	51.8	60.7
November	591.3	618.3	18.2	7.9	6.7	7.4	74.4	51.9	60.5
December	591.5	616.9	20.7	8.0	6.5	7.4	69.7	52.4	60.9
MONTHLY, TREND									
<b>1999-00</b>									
October	n.a.	n.a.	n.a.	8.6	7.8	8.2	69.7	52.1	60.7
November	n.a.	n.a.	n.a.	8.5	7.7	8.1	69.9	52.3	60.9
December	n.a.	n.a.	n.a.	8.4	7.7	8.1	70.1	52.4	61.1
January	n.a.	n.a.	n.a.	8.4	7.7	8.1	70.4	52.4	61.2
February	n.a.	n.a.	n.a.	8.4	7.8	8.2	70.7	52.2	61.2
March	n.a.	n.a.	n.a.	8.5	7.9	8.2	70.9	52.0	61.2
April	n.a.	n.a.	n.a.	8.6	7.9	8.3	71.0	51.8	61.2
May	n.a.	n.a.	n.a.	8.6	7.8	8.2	71.0	51.7	61.2
June	n.a.	n.a.	n.a.	8.5	7.6	8.1	70.9	51.8	61.1
<b>2000-01</b>									
July	n.a.	n.a.	n.a.	8.3	7.4	7.9	70.7	51.9	61.1
August	n.a.	n.a.	n.a.	8.1	7.2	7.7	70.5	52.0	61.0
September	n.a.	n.a.	n.a.	7.9	7.0	7.5	70.2	52.0	60.9
October	n.a.	n.a.	n.a.	7.8	6.9	7.4	69.8	51.9	60.7
November	n.a.	n.a.	n.a.	7.8	6.8	7.4	69.5	51.8	60.5
December	n.a.	n.a.	n.a.	7.8	6.8	7.4	69.2	51.7	60.3

(a) Population aged 15 and over.

Source: Labour Force, Australia, Preliminary (Cat. no. 6202.0).

## AVERAGE WEEKLY EARNINGS OF EMPLOYEES

Period	Males			Females			Persons		
	Full-time adult ordinary time earnings	Full-time adult total earnings	All males total earnings	Full-time adult ordinary time earnings	Full-time adult total earnings	All females total earnings	Full-time adult ordinary time earnings	Full-time adult total earnings	All employees total earnings
ANNUAL AVERAGE (\$ per week)									
<b>1997-98</b>	705.60	755.05	646.28	606.05	619.33	438.50	670.53	707.20	545.70
<b>1998-99</b>	741.20	797.55	678.28	627.93	647.28	464.35	699.13	741.70	575.23
<b>1999-00</b>	756.75	812.53	695.00	641.65	663.28	457.23	714.38	757.50	575.90
QUARTERLY, ORIGINAL (\$ per week)									
<b>1998-99</b>									
May	742.20	796.80	686.30	624.70	648.00	457.30	699.70	742.90	576.10
<b>1999-00</b>									
August	742.70	792.00	669.30	631.20	655.70	451.20	702.00	742.20	560.40
November	745.30	805.60	697.40	638.70	663.40	453.80	705.70	752.70	572.80
February	768.60	821.20	708.30	645.30	656.80	461.30	723.00	760.30	584.50
May	770.40	831.30	705.00	651.40	677.20	462.60	726.80	774.80	585.90
<b>2000-01</b>									
August	791.60	846.00	724.80	667.70	692.60	484.00	745.50	788.90	603.60
QUARTERLY, TREND (\$ per week)									
<b>1998-99</b>									
May	740.70	796.50	677.30	629.00	653.20	458.10	699.90	743.80	570.10
<b>1999-00</b>									
August	742.70	796.50	694.00	632.00	655.70	453.80	702.10	744.80	569.00
November	750.50	804.50	693.10	636.80	657.40	453.50	708.50	750.50	572.60
February	762.30	818.00	702.30	644.30	663.60	458.90	718.80	761.20	580.10
May	775.30	833.60	711.10	654.40	676.10	468.00	743.50	790.90	599.70
<b>2000-01</b>									
August	787.30	848.10	719.00	667.00	693.40	479.30	743.50	790.90	599.70

Source: Average Weekly Earnings, States and Australia (Cat. no. 6302.0).



## 23

## SECURED HOUSING FINANCE COMMITMENTS(a)

Period	Original		Seasonally adjusted		Trend	
	Dwelling units	Value	Dwelling units	Value	Dwelling units	Value
	no.	\$m	no.	\$m	no.	\$m
<b>1999-00</b>						
September	3 545	349	3 649	361	3 736	365
October	3 708	370	3 977	394	3 832	375
November	4 310	422	3 959	380	3 878	380
December	3 924	390	3 764	366	3 878	380
January	3 154	313	3 840	381	3 825	377
February	3 976	398	3 836	382	3 727	369
March	4 236	417	3 671	362	3 621	362
April	3 099	309	3 367	340	3 559	357
May	4 003	401	3 707	365	3 566	356
June	3 510	354	3 239	340	3 629	358
<b>2000-01</b>						
July	3 537	332	3 747	355	3 723	362
August	4 079	383	4 176	396	3 810	366
September	3 704	347	3 968	373	3 865	367
October	3 629	345	3 722	348	3 889	366
November	4 061	394	3 753	361	3 879	364

(a) Excludes alterations and additions. Includes refinancing.

Source: *Housing Finance for Owner Occupation, Australia (Cat. no. 5609.0)*.

## 24

## FINANCE COMMITMENTS

Period	Commercial finance commitments			Personal finance commitments			
	Fixed loan facilities	Revolving credit facilities	Total commercial finance commitments	Fixed loan facilities	Revolving credit facilities	Total personal finance commitments	Total lease finance commitments
	\$m	\$m	\$m	\$m	\$m	\$m	\$m
<b>1999-00</b>							
September	265.9	206.5	472.4	126.6	140.0	266.6	19.8
October	325.5	209.8	535.3	125.0	128.0	253.0	14.7
November	289.4	221.8	511.2	128.9	151.3	280.2	12.7
December	380.7	296.0	676.8	124.7	143.8	268.5	13.4
January	272.3	134.8	407.1	122.6	94.8	217.4	10.2
February	301.4	201.0	502.4	138.4	120.8	259.2	18.0
March	403.7	240.8	644.5	155.3	159.3	314.7	12.3
April	370.5	176.4	546.9	108.2	135.6	243.7	17.7
May	309.5	249.9	559.4	139.5	156.1	295.6	16.7
June	758.9	392.6	1 151.4	154.0	147.9	301.9	18.4
<b>2000-01</b>							
July	339.5	256.5	596.0	112.8	147.0	259.8	9.8
August	249.2	163.0	412.3	141.9	162.6	304.5	10.1
September	235.4	269.6	505.0	131.6	121.0	252.6	15.8
October	247.0	150.7	397.7	126.0	122.6	248.6	9.4
November	287.3	254.6	541.9	149.5	163.5	312.9	13.6

Source: *Unpublished data, PC Ausstats*.

## PUBLICATIONS SOURCE INDEX

- (1) *Australian National Accounts, Quarterly State Details*  
(Cat. no. 5206.0.40.001)
- (2) *International Merchandise Trade, Australia*  
(Cat. no. 5422.0) Quarterly
- (3) *Retail Trade, Australia* (Cat. no. 8501.0) Monthly
- (4) *New Motor Vehicles Registrations, Australia, Preliminary*  
(Cat. no. 9301.0) Monthly
- (5) *State Estimates of Private New Capital Expenditure*  
(Cat. no. 5646.0) Quarterly
- (6) *Tourist Accommodation, Australia* (Cat. no. 8635.0) Quarterly
- (7) *Building Approvals, Australia* (Cat. no. 8731.0) Monthly
- (8) *Building Activity, Australia* (Cat. no. 8752.0) Quarterly
- (8a) *Building Activity, Australia, Dwelling Unit Commencements, Preliminary* (Cat. no. 8750.0) Quarterly
- (9) *Engineering Construction Activity, Australia*  
(Cat. no. 8762.0) Quarterly
- (10) *Manufacturing Production, Australia, Preliminary*  
(Cat. no. 8301.0) Quarterly
- (11) *Livestock Products, Australia* (Cat. no. 7215.0) Quarterly
- (12) *Actual and Expected Private Mineral Exploration, Australia*  
(Cat. no. 8412.0) Quarterly
- (13) *Consumer Price Index* (Cat. no. 6401.0) Quarterly
- (14) *Price Index of Materials Used in House Building, Six State Capital Cities and Canberra* (Cat. no. 6408.0) Quarterly
- (15) *Price Index of Materials Used in Building Other Than House Building, Six State Capital Cities and Canberra*  
(Cat. no. 6407.0) Quarterly
- (16) *House Price Indexes: Eight Capital Cities*  
(Cat. no. 6416.0) Quarterly
- (17) *Australian Demographic Statistics* (Cat. no. 3101.0) Quarterly
- (18) *Labour Force, Australia, Preliminary* (Cat. no. 6202.0) Monthly
- (19) *Job Vacancies, Australia* (Cat. no. 6354.0) Quarterly
- (20) *Industrial Disputes, Australia* (Cat. no. 6321.0) Monthly
- (21) Unpublished overseas arrival and departure statistics
- (22) *Average Weekly Earnings, States and Australia*  
(Cat. no. 6302.0) Quarterly
- (23) *Wage Cost Index, Australia* (Cat. no. 6345.0) Quarterly
- (24) *Housing Finance for Owner Occupation, Australia*  
(Cat. no. 5609.0) Monthly
- (25) Unpublished statistics available from PC AUSSTATS
- (26) *Reserve Bank of Australia Bulletin*



## FOR MORE INFORMATION...

- INTERNET* **www.abs.gov.au** the ABS web site is the best place to start for access to summary data from our latest publications, information about the ABS, advice about upcoming releases, our catalogue, and Australia Now—a statistical profile.
- LIBRARY* A range of ABS publications is available from public and tertiary libraries Australia-wide. Contact your nearest library to determine whether it has the ABS statistics you require, or visit our web site for a list of libraries.
- CPI INFOLINE* For current and historical Consumer Price Index data, call 1902 981 074 (call cost 77c per minute).
- DIAL-A-STATISTIC* For the latest figures for National Accounts, Balance of Payments, Labour Force, Average Weekly Earnings, Estimated Resident Population and the Consumer Price Index call 1900 986 400 (call cost 77c per minute).

**INFORMATION SERVICE**

Data which have been published and can be provided within five minutes are free of charge. Our information consultants can also help you to access the full range of ABS information—ABS user-pays services can be tailored to your needs, time frame and budget. Publications may be purchased. Specialists are on hand to help you with analytical or methodological advice.

- PHONE* **1300 135 070**
- EMAIL* **client.services@abs.gov.au**
- FAX* 1300 135 211
- POST* Client Services, ABS, GPO Box 796, Sydney 1041

## WHY NOT SUBSCRIBE?

ABS subscription services provide regular, convenient and prompt deliveries of ABS publications and products as they are released. Email delivery of monthly and quarterly publications is available.

- PHONE* 1300 366 323
- EMAIL* subscriptions@abs.gov.au
- FAX* 03 9615 7848
- POST* Subscription Services, ABS, GPO Box 2796Y, Melbourne 3001



2130740002014  
ISSN 1039-8880

RRP \$19.00